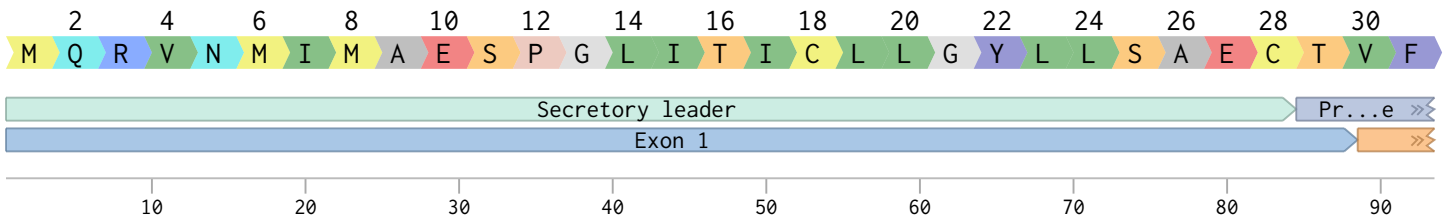
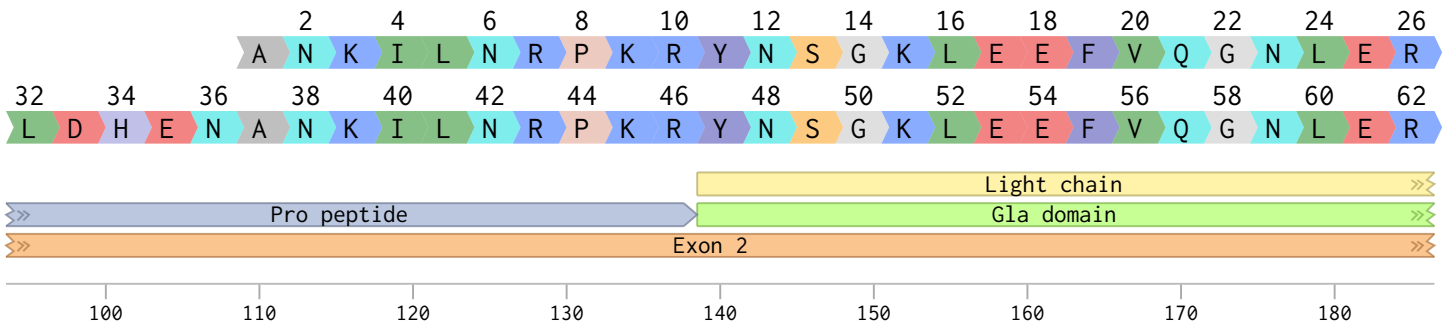


NM_000133 (1386 bp)

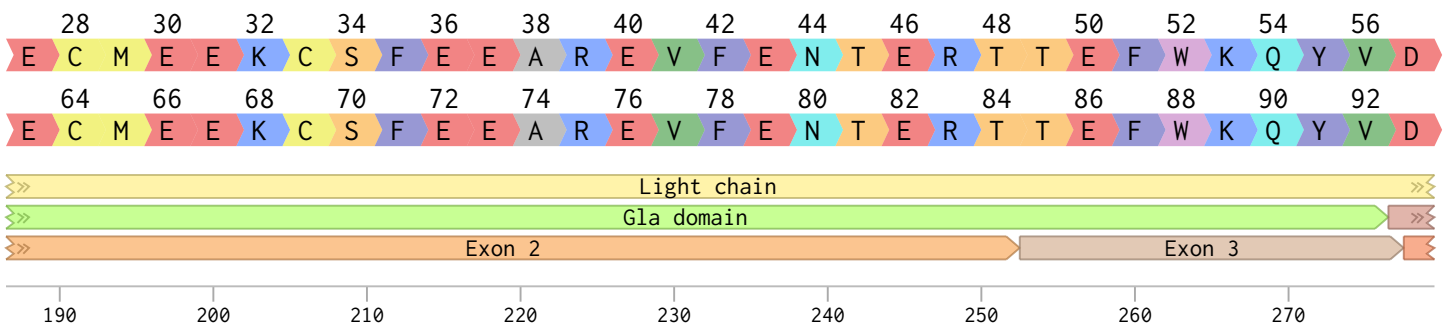
ATGCAGCGCGTGAACATGATCATGGCAGAATCACCAGGCCTCATCACCATCTGCCTTTTAGGATATCTACTCAGTGCTGAATGTACAGTTTTT
 TACGTCGCGCACTTGTACTAGTACCGTCTTAGTGGTCCGAGTAGTGGTAGACGGAAAATCCTATAGATGAGTCACGACTTACATGTCAAAAA



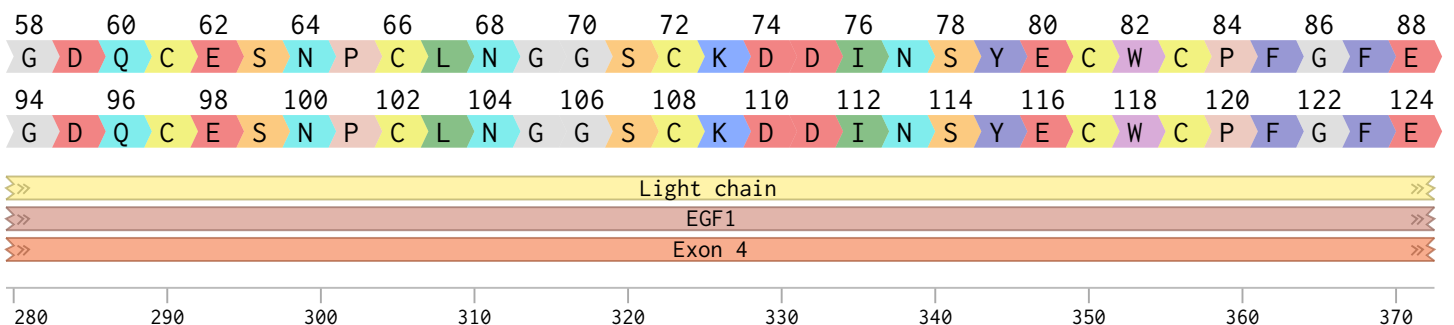
CTTGATCATGAAAACGCCAACAAAATTCTGAATCGGCCAAAGAGGTATAATTCAGGTAATTGGAAGAGTTTGTTC AAGGGAACCTTGAGAGA
 GAACTAGTACTTTTTCGCGTTGTTTTAAGACTTAGCCGTTTCTCCATATTAAGTCCATTTAACCTTCTCAAACAAGTTCCCTTGGAACTCTCT



GAATGTATGGAAGAAAAGTGTAGTTTTGAAGAAGCACGAGAAGTTTTTGAAAACACTGAAAGAACAACCTGAATTTTGAAGCAGTATGTTGAT
 CTTACATACCTTCTTTTTCACATCAAAACTTCTTCGTGCTCTTCAAAAACCTTTGTGACTTTCTGTTGACTTAAAACCTTCGTCATACAACCTA

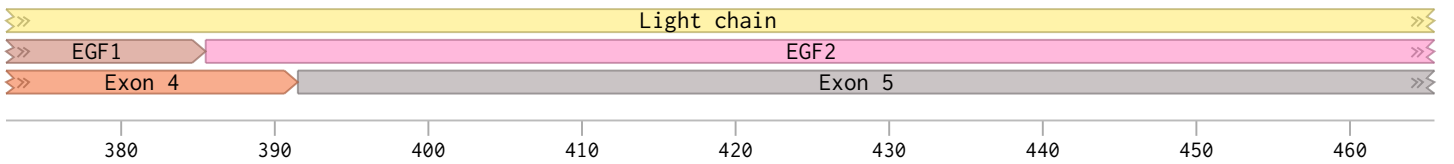


GGAGATCAGTGTGAGTCCAATCCATGTTTAAATGGCGGCAGTTGCAAGGATGACATTAATTCCTATGAATGTTGGTGTCCCTTTGGATTTGAA
 CCTCTAGTCACACTCAGTTAGGTACAAATTTACCGCCGTC AACGTTTCTACTGTAATTAAGGATACTTACAACCACAGGGAACCTAAACTT



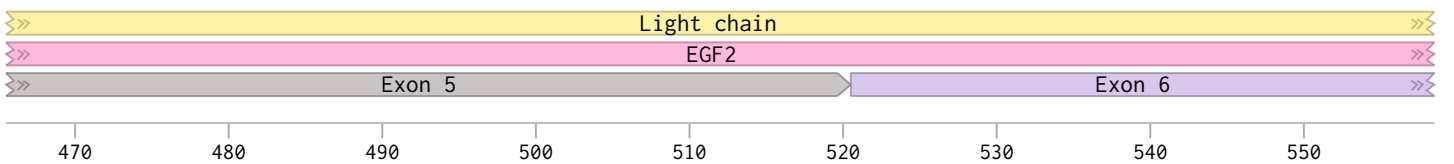
GGAAAGAAGTGTGAATTAGATGTAACATGTAACATTAAGAATGGCAGATGCGAGCAGTTTTGTAAAAATAGTGCTGATAACAAGGTGGTTTGC
 CCTTTCTTGACACTTAATCTACATTGTACATTGTAATTCTTACCGTCTACGCTCGTCAAAACATTTTTATCAGCACTATTGTTCCACCAAACG

90 92 94 96 98 100 102 104 106 108 110 112 114 116 118
 G K N C E L D V T C N I K N G R C E Q F C K N S A D N K V V C
 126 128 130 132 134 136 138 140 142 144 146 148 150 152 154
 G K N C E L D V T C N I K N G R C E Q F C K N S A D N K V V C



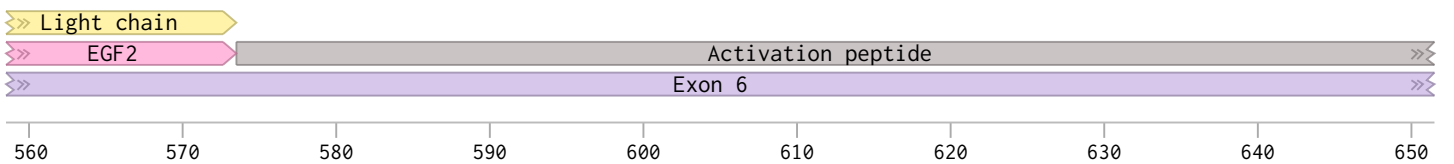
TCCTGTAAGGATATCGACTTGCAGAAAACCAGAAGTCTGTGAACCAGCAGTGCCATTTCCATGTGGAAGAGTTTCTGTTTCACAAACT
 AGGACATGACTCCCTATAGCTGAACGTCTTTTGGTCTTCAGGACACTTGGTCGTACCGTAAAGGTACACCTTCTCAAAGACAAAGTGTTTGA

120 122 124 126 128 130 132 134 136 138 140 142 144 146 148 150
 S C T E G Y R L A E N Q K S C E P A V P F P C G R V S V S Q T
 156 158 160 162 164 166 168 170 172 174 176 178 180 182 184 186
 S C T E G Y R L A E N Q K S C E P A V P F P C G R V S V S Q T



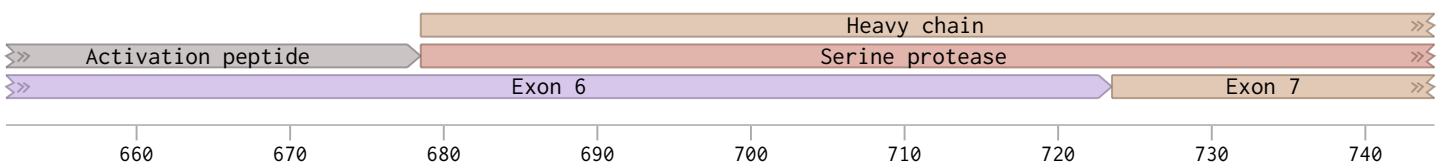
TCTAAGCTCACCCGTGCTGAGACTGTTTTCTGATGTGGACTATGTAAATTCTACTGAAGCTGAAACCATTTTGGATAACATCACTCAAAGC
 AGATTCCGAGTGGGCAGACTCTGACAAAAAGGACTACACCTGATACATTTAAGATGACTTCGACTTTGGTAAAACCTATTGTAGTGAGTTTCG

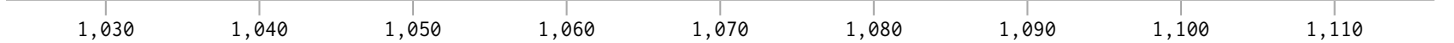
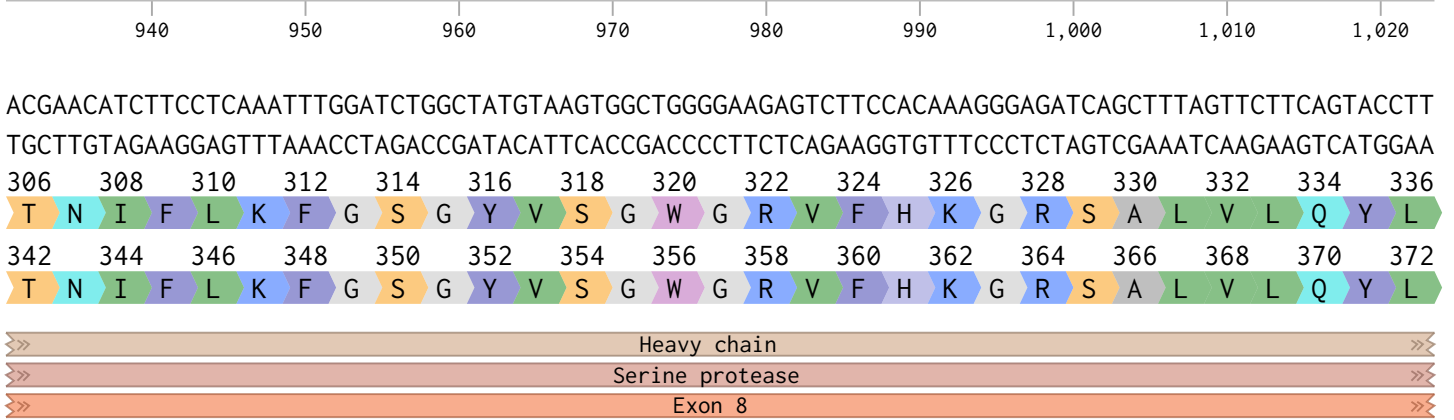
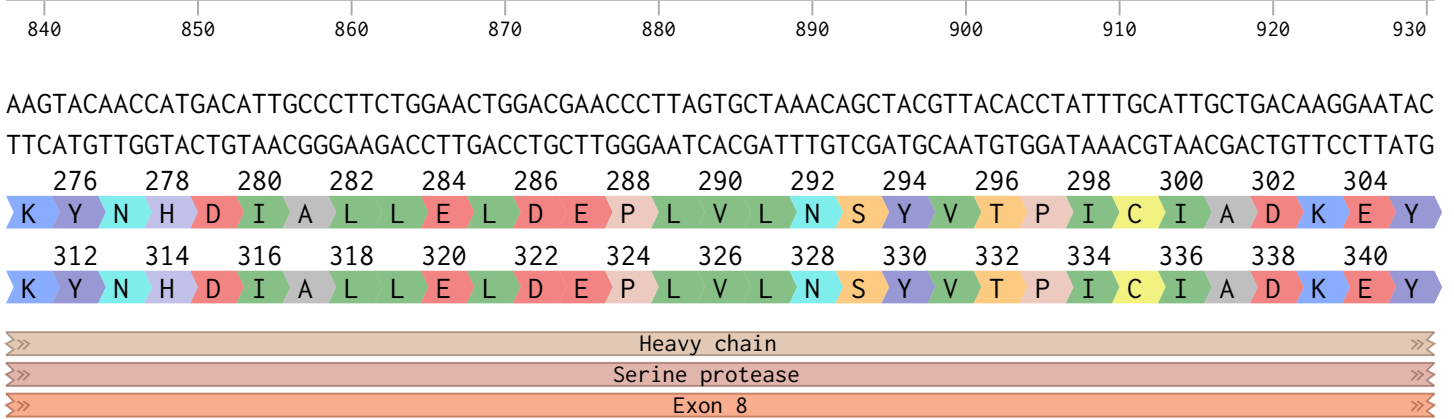
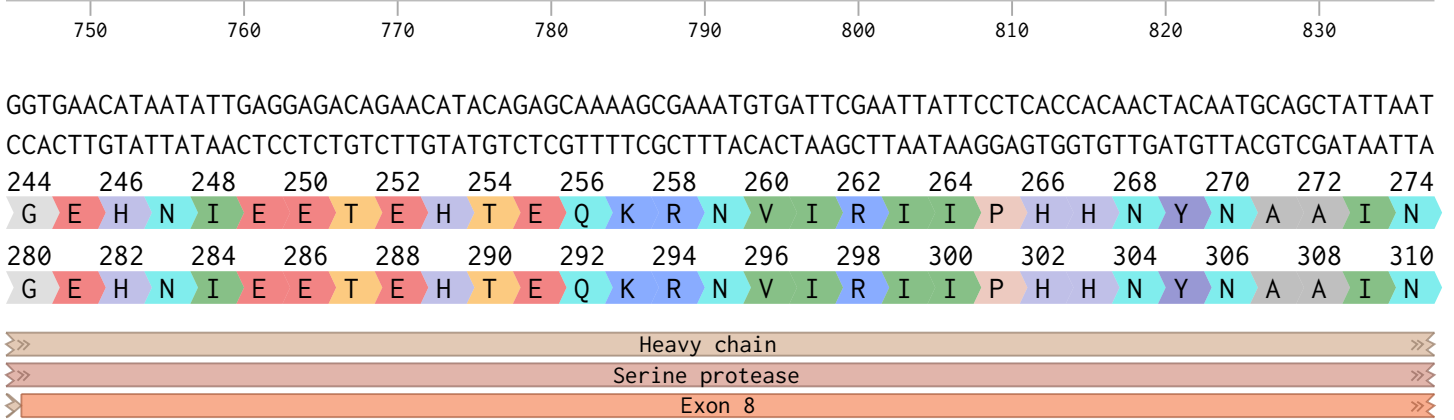
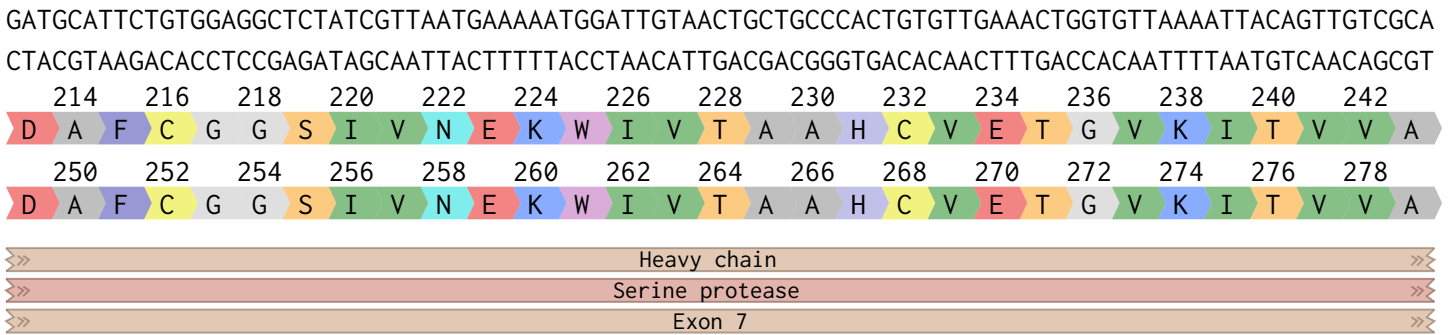
152 154 156 158 160 162 164 166 168 170 172 174 176 178 180
 S K L T R A E T V F P D V D Y V N S T E A E T I L D N I T Q S
 188 190 192 194 196 198 200 202 204 206 208 210 212 214 216
 S K L T R A E T V F P D V D Y V N S T E A E T I L D N I T Q S



ACCCAATCATTTAATGACTTCACTCGGGTTGTTGGTGGAGAAGATGCCAAACCAGGTCAATTCCTTGGCAGGTTGTTTTGAATGGTAAAAGTT
 TGGGTTAGTAAATTAAGTGAAGTGAAGCCCAACAACCACCTCTTCTACGGTTTGGTCCAGTTAAGGGAACCGTCCAACAAAACCTTACCATTTC

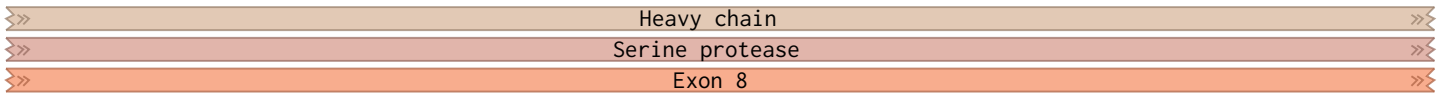
182 184 186 188 190 192 194 196 198 200 202 204 206 208 210 212
 T Q S F N D F T R V V G G E D A K P G Q F P W Q V V L N G K V
 218 220 222 224 226 228 230 232 234 236 238 240 242 244 246 248
 T Q S F N D F T R V V G G E D A K P G Q F P W Q V V L N G K V





AGAGTTCACCTTGTGACCGAGCCACATGTCTTCGATCTACAAAGTTCACCATCTATAACAACATGTTCTGTGCTGGCTTCCATGAAGGAGGT
TCTCAAGGTGAACAACACTGGCTCGGTGTACAGAAGCTAGATGTTTTCAAGTGGTAGATATTGTTGTACAAGACACGACCGAAGGTA

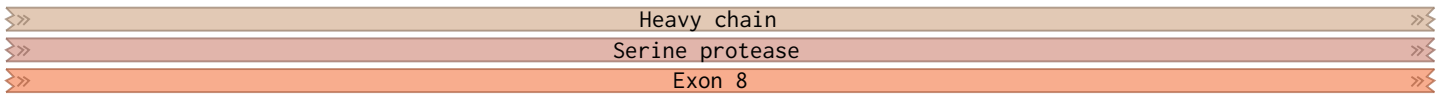
338 340 342 344 346 348 350 352 354 356 358 360 362 364 366
R V P L V D R A T C L R S T K F T I Y N N M F C A G F H E G G
374 376 378 380 382 384 386 388 390 392 394 396 398 400 402
R V P L V D R A T C L R S T K F T I Y N N M F C A G F H E G G



1,120 1,130 1,140 1,150 1,160 1,170 1,180 1,190 1,200

AGAGATTCATGTCAAGGAGATAGTGGGGGACCCCATGTTACTGAAGTGAAGGGACCAGTTTCTTAACTGGAATTATTAGCTGGGGTGAAGAG
TCTCTAAGTACAGTTCCTCTATACCCCCCTGGGGTACAATGACTTCACCTTCCCTGGTCAAAGAATTGACCTTAATAATCGACCCCACTTCTC

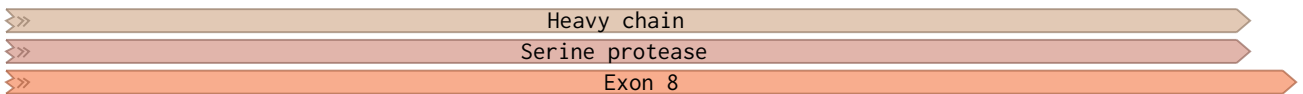
368 370 372 374 376 378 380 382 384 386 388 390 392 394 396 398
R D S C Q G D S G G P H V T E V E G T S F L T G I I S W G E E
404 406 408 410 412 414 416 418 420 422 424 426 428 430 432 434
R D S C Q G D S G G P H V T E V E G T S F L T G I I S W G E E



1,210 1,220 1,230 1,240 1,250 1,260 1,270 1,280 1,290 1,300

TGTGCAATGAAAGGCAAATATGGAATATATACCAAGGTATCCCGGTATGTCAACTGGATTAAGGAAAAACAAAGCTCACTTAA
ACACGTTACTTCCGTTTATACCTTATATATGGTTCATAGGCCATACAGTTGACCTAATTCCTTTTTTGTTCGAGTGAATT

400 402 404 406 408 410 412 414 416 418 420 422 424 426
C A M K G K Y G I Y T K V S R Y V N W I K E K T K L T *
436 438 440 442 444 446 448 450 452 454 456 458 460 462
C A M K G K Y G I Y T K V S R Y V N W I K E K T K L T *



1,310 1,320 1,330 1,340 1,350 1,360 1,370 1,380